

FARMVILLE CORPORATE PARK

GENERAL

Acreage: 440 total acres
150 acres available under Pitt County control

Price: \$20,000 /acre

Industrial Lot Sizes: 5 – 100+ acres

Address: Fields Street Extension, Farmville, NC 27828

Location: Farmville, North Carolina, Greenville, NC MSA, USA

Zoning: Industrial, Agricultural

Former Use: Agriculture

Taxes: County Only .6891 / 100

Park Tenants: Coastal Beverage, DR Burton

PHYSICAL

Elevation: 80' to 86' above MSL

Appearance: Generally flat; cleared

Soils: Sandy clay & loam; Geotech study available (March 2022)

Drainage: Existing ditches; High, well-drained, non-wetlands

Environmental: Phase I environmental review found no environmental issues (October 2021)

TRANSPORTATION

Access: Direct access to US 264-A

Interstate: Designated I-587 (US 264) controlled access, interstate quality highway | Distance: 4 miles (5 minutes), I-95 | Distance: 20 miles (20 minutes)

Regional Air: PGV Airport | Distance: 15 miles (20 minutes)

International Air: RDU Airport | Distance: 85 miles (85 minutes)

Closet Port: Morehead City | Distance: 99 miles (less than 2 hours); FTZ 214

UTILITIES

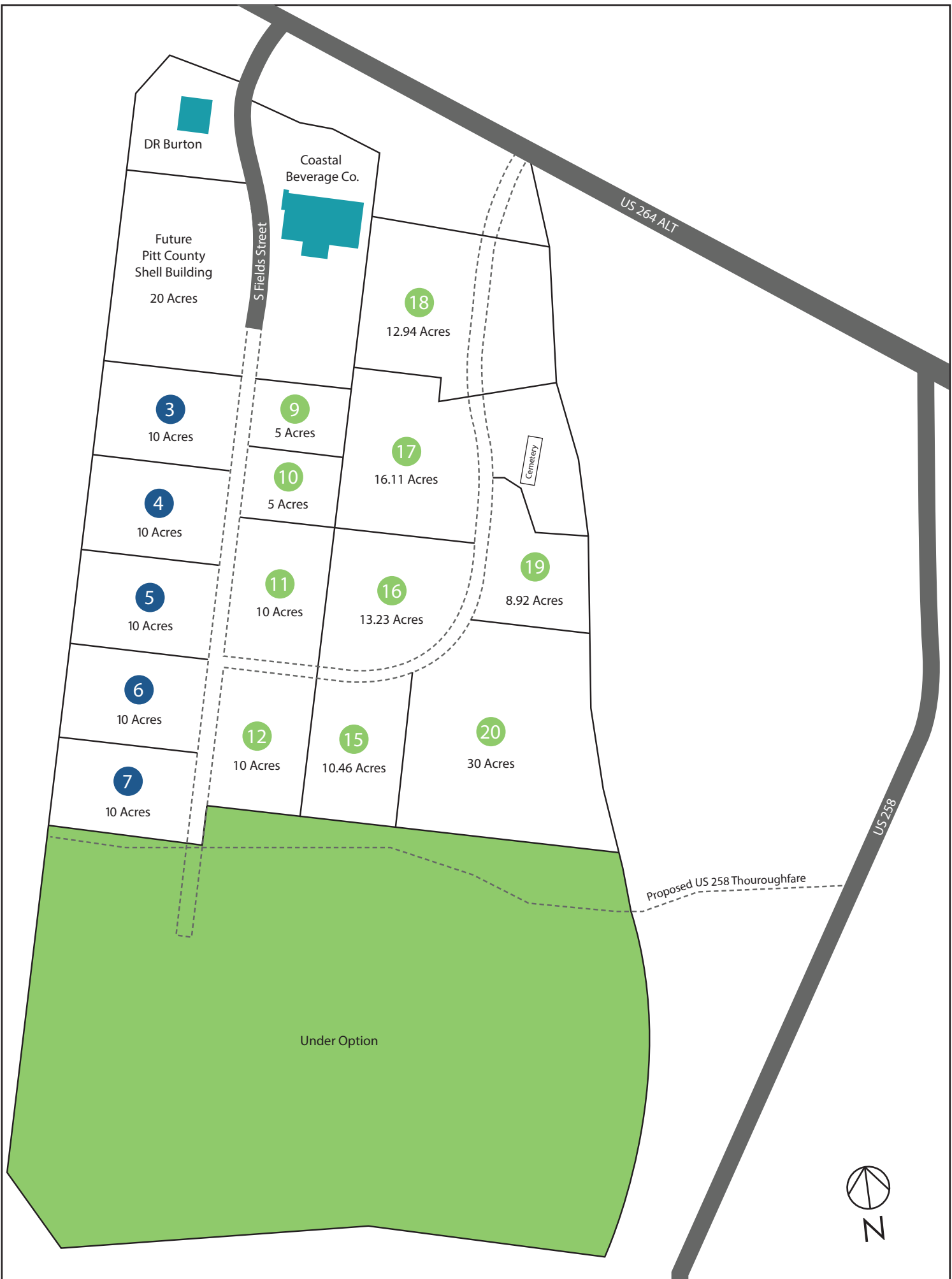
Water: 12" (Town of Farmville); 6 MGD capacity

Sewer: 8" and 12" (Town of Farmville); 3 MGD capacity

Gas: 4" (Piedmont Natural Gas)

Electric: 12.5 KV Distribution (Pitt-Greene EMC) line on site served by 230 KV substation within 5000 feet; New dedicated industrial circuit to be constructed on site; 34.5 KV transmission line on site scheduled to be upgraded to 115 KV line

Telecommunications: Fiber optic facilities and broadband internet available (CenturyLink)



DR Burton

Coastal Beverage Co.

Future Pitt County Shell Building
20 Acres

S Fields Street

US 264 ALT

3

10 Acres

9

5 Acres

18

12.94 Acres

17

16.11 Acres

Cemetery

4

10 Acres

10

5 Acres

19

8.92 Acres

5

10 Acres

11

10 Acres

16

13.23 Acres

6

10 Acres

12

10 Acres

15

10.46 Acres

20

30 Acres

7

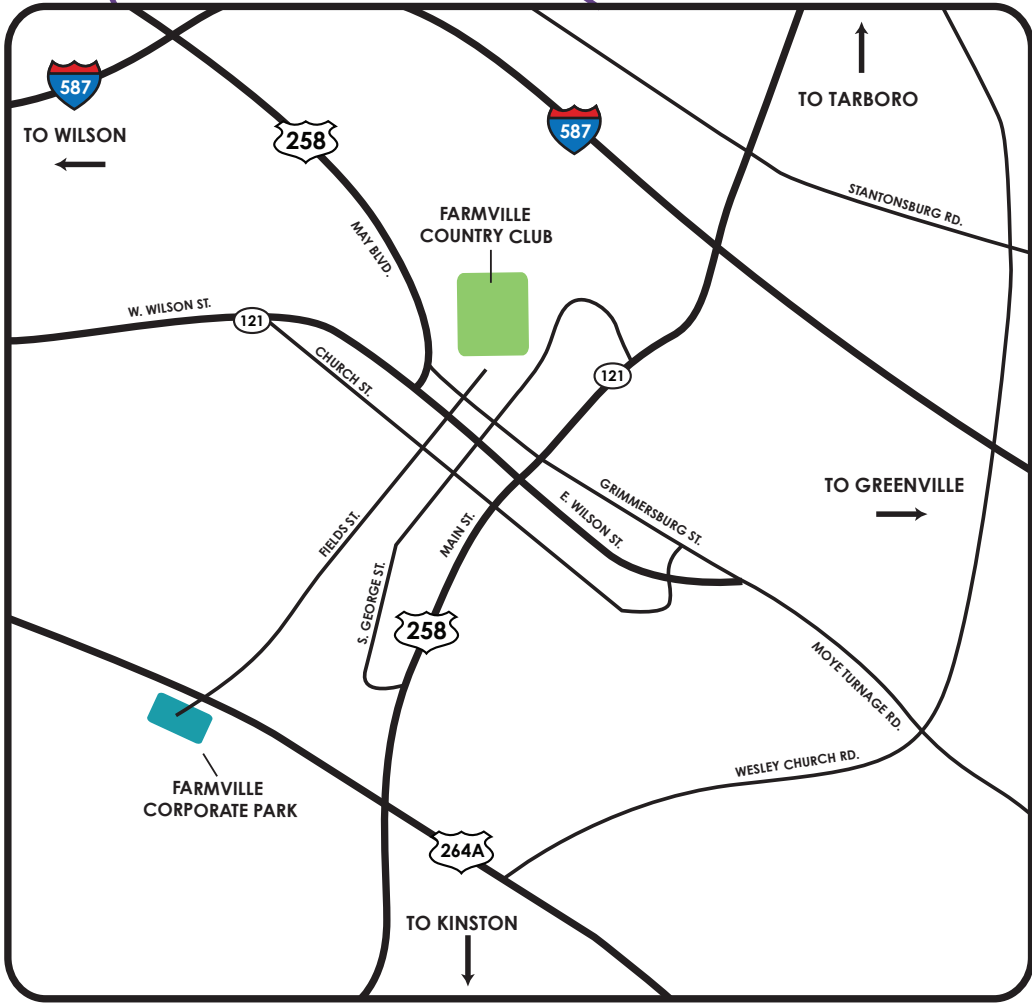
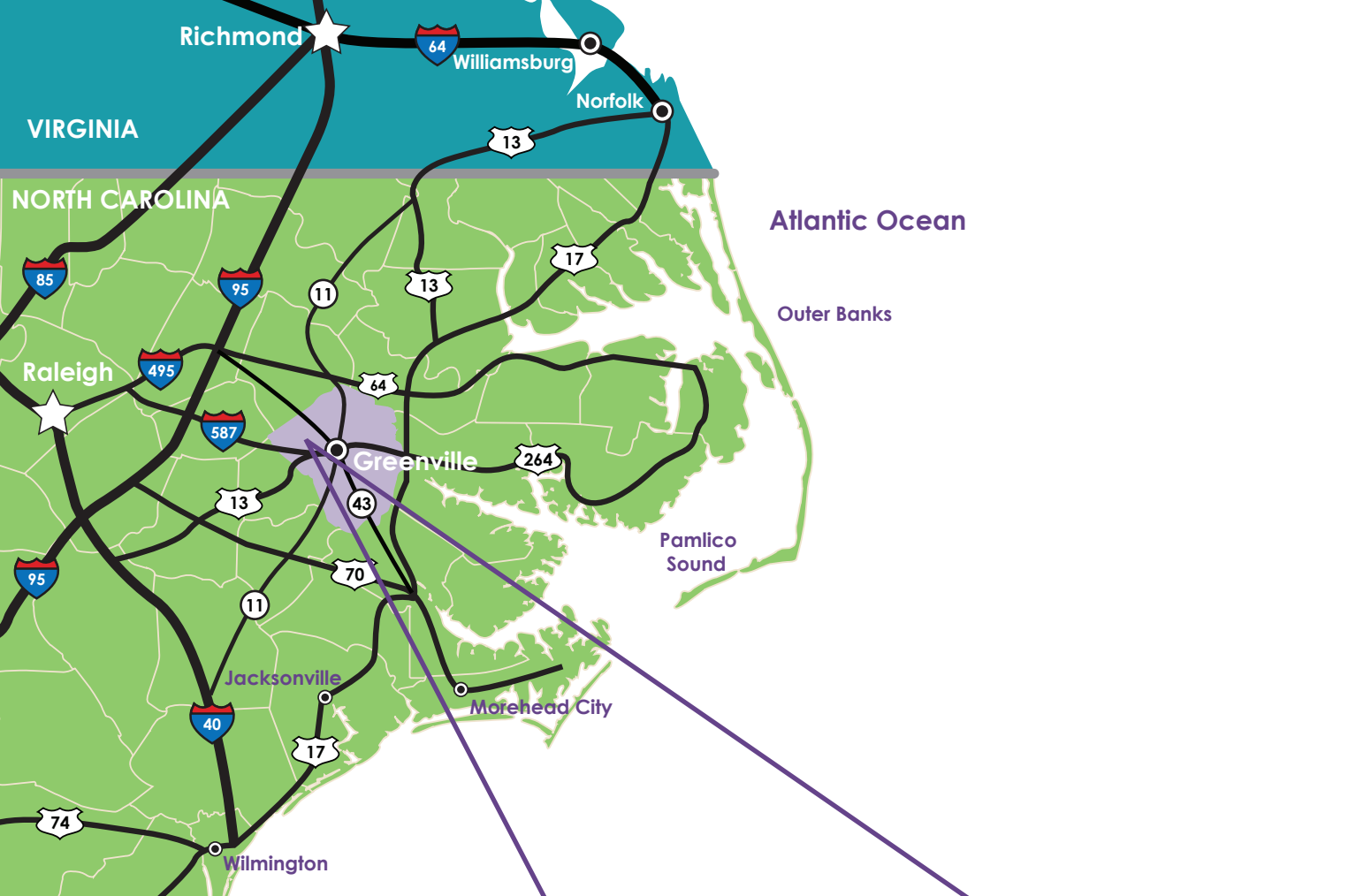
10 Acres

US 258

Proposed US 258 Thoroughfare

Under Option





pc ed PITT COUNTY
ECONOMIC
DEVELOPMENT
THE GREENVILLE, NC MSA

Contact:
252.902.2075
kelly.andrews@pittcountync.gov
www.locateincarolina.com